

# ANPF

## ASHLAND NEW PLAYS FESTIVAL

VOL. 2 NO. 3

FALL 2010

### ANPF 2010 Has Something for Everyone

The festival is almost here! We are thrilled with our lineup and know that you will be, too. Here is just a taste of the wonderful plays we have chosen. Tickets are on sale now, and advance purchase is recommended.

#### *The Exceptionals* by Bob Clyman

Gwen and Allie meet at a research institute that has matched both of them with a sperm donor whose IQ tops 180. Instant adversaries, both women have guilty, deeply held secrets that are gradually revealed. Tension mounts as they find the institute imposing control over their children, and each is forced to make a decision that will test her values and ambitions. Are children to be the sociopolitical pawns of the future?

**Directed by John Stadelman, the cast includes Tami Marston, Danforth Comins, Holly Weber Neimark, Sarah Foster, and Kimberli Colbourne. *The Exceptionals* will be performed Wednesday, October 20, at 8 p.m. and Sunday, October 24, at 2 p.m.**

#### *The Insidious Impact of Anton* by David Hilder

With her wicked sense of humor, Francesca, a hip, audacious urbanite, has challenged and insulted everyone around her. Her self-satisfied ways have become tiresome to her friends and family. Then she meets Anton, a mysterious stranger, and the oddest things begin to happen. What is the insidious impact of Anton?

**Directed by David Salsa, the cast includes Kimbre Lancaster, Pamela Bullock, Shane Rodgers, Orion Bradshaw, and Sophia Palosaari. *The Insidious Impact of Anton* will be performed Thursday, October 21, at 8 p.m. and Saturday, October 23, at 2 p.m.**

#### *A Gold Star in the Window*

by Harlene Goodrich  
Mardelle, mourning the death of her veteran son, is outraged by the government's refusal to honor him with a gold star to hang in the window. Her husband, daughter, and son-in-law are opposed to the gold star because it will draw attention to the way he died. Over the course of one afternoon, an apparition pays a visit, quarrels escalate, jealousies are revealed, and patriotism is redefined.

**Directed by Lenny Neimark, the cast includes Judith Sanford, Douglas Rowe, Brent Hinkley, Eve Smyth, Paul Roland, and Holly Weber Neimark. *A Gold Star in the Window* will be performed Friday, October 22, at 2 p.m. and Saturday, October 23, at 8 p.m.**

# ANPF 2010

OCTOBER 20-24

#### *Technicolor Life*

by Jami Brandli  
War hero Billie Hunter, recently home from Iraq with a missing left hand, is angry and secretive. Her adoring teenage sister, Maxine, discovers Billie's diary, a highly charged account of what Billie endured in Iraq. Enter Franny, the flamboyant grandmother, who formulates a plan to help Billie and in the process makes an announcement that throws the entire family into chaos.

**Directed by Caroline Shaffer, the cast includes Vilma Silva, Jeffrey King, Brandy Carson, Rachel Kaiser, Tai Sammons, Brent Rose, and Pamela Bullock. *Technicolor Life* will be performed Thursday, October 21, at 2 p.m. and Friday, October 22, at 8 p.m.**



EM Lewis, an ANPF 2008 winner, is returning to Ashland this year as our host playwright, welcoming the four winners of ANPF 2010, leading the talkbacks, and teaching a playwrighting workshop.

## PLAYWRITING WORKSHOP

Do you have a play in you?

Join host playwright EM Lewis and the four winning playwrights of ANPF 2010 for a three-hour hands-on playwrighting workshop that will shake loose your inner Shakespeare.

The workshop is open to both beginning writers and experienced playwrights, young and old! There will be something for everyone—from finding ideas and shaping conflict, to helping your dialogue sound real, to structuring your play so it works.

Please join us!

Saturday, October 23  
10 a.m. to 1 p.m.

Bring paper and pen, or a laptop if you prefer.

Be ready to write!

Location will be announced in October.



Check our website at [www.AshlandNewPlays.org](http://www.AshlandNewPlays.org) for updates. Details will be posted as they are finalized.

ANPF extends our heartfelt thanks to Arden Forest Inn, Albion Inn, Iris Inn, and Oak Street Station Bed & Breakfast for graciously hosting our playwrights while they're in town!

Tickets for ANPF 2010 are available online through the ShowTix4U link at [www.AshlandNewPlays.org](http://www.AshlandNewPlays.org), by calling (541) 488-7995, and (after October 1) at Paddington Station.

All performances are held at the First Congregational Church 717 Siskiyou Boulevard in Ashland.

# Order Tickets in Advance for Savings and a Guaranteed Seat

Tickets for ANPF 2010 are on sale now! Take advantage of the Festival Ticket Package for \$50 when you purchase one ticket for each of the four readings. You pick your preferred dates and times. Please use the order form below for the \$50 Festival Ticket Package and/or for \$15 individual tickets. Advance tickets are also available for \$15 each at Paddington Station, 125 E. Main Street after October 1. Although tickets will be available at the door, they are sold first come, first served, so we recommend advance purchases.

## ANPF 2010 TICKET PRESALE ORDER FORM

*Limited-time offer: Your order must be received by Monday, October 4, 2010, for discounted ticket prices to apply.*

name \_\_\_\_\_ e-mail \_\_\_\_\_

address \_\_\_\_\_ city \_\_\_\_\_ state \_\_\_\_\_ ZIP \_\_\_\_\_

phone \_\_\_\_\_ alt. phone \_\_\_\_\_

**Each Festival Ticket Package includes one reading of each play. All performances are at the First Congregational Church, 717 Siskiyou Boulevard in Ashland. Please indicate your choices below. Questions? Call (541) 488-7995.**

### *The Exceptionals*

Wednesday, 10/20, 8 p.m.

Sunday, 10/24, 2 p.m.

# Tickets \_\_\_\_\_

# Tickets \_\_\_\_\_

### *Technicolor Life*

Thursday, 10/21, 2 p.m.

Friday, 10/22, 8 p.m.

# Tickets \_\_\_\_\_

# Tickets \_\_\_\_\_

### *The Insidious Impact of Anton*

Thursday, 10/21, 8 p.m.

Saturday, 10/23, 2 p.m.

# Tickets \_\_\_\_\_

# Tickets \_\_\_\_\_

### *Gold Star in the Window*

Friday, 10/22, 2 p.m.

Saturday, 10/23, 8 p.m.

# Tickets \_\_\_\_\_

# Tickets \_\_\_\_\_

Number of Festival Ticket Packages at \$50 each: \_\_\_\_\_ Total tickets: \_\_\_\_\_ Total cost: \_\_\_\_\_

Number of individual play tickets at \$15 each: \_\_\_\_\_ Total cost: \_\_\_\_\_

Your tax-deductible donation: \_\_\_\_\_

Mail to: Ashland New Plays Festival  
PO Box 3314  
Ashland, OR 97520

Total enclosed: \_\_\_\_\_

*Please make check or money order payable to ANPF*

**Tickets for the workshops are \$5 each and are available at the door.**

**Note:** To qualify for this special pricing, your order must be received by Monday, October 4, 2010.

### ANPF NEEDS YOU!

As a nonprofit organization run entirely by volunteers, ANPF relies on generous contributions from people like you. Whether your gift is large or small, it is *you*—our members—who make it possible for us to continue to bring new plays to the stage. These fresh works tell the stories of people's lives—their moments of joy and tragedy, their failures and triumphs—stories that come to life through the voices of professional actors on our Ashland stage. During the magic moments of rehearsals, readings, and discussions, a playwright may very well discover new insights to refine a good script into a masterpiece. You can help make this happen by becoming a member of ANPF—one of the premier new plays festivals in the country. Check out our membership levels at [www.AshlandNewPlays.org/Membership.html](http://www.AshlandNewPlays.org/Membership.html). All gifts are significant and tax-deductible, and every little bit helps. We appreciate your ongoing support!

# SPOTLIGHT ON THE ANPF 2010 WINNING PLAYWRIGHTS

Introducing Jami Brandli, Robert Clyman, Harlene Goodrich,  
and David Hilder in their own words...

## JAMI BRANDLI

I grew up in New Jersey, but I spent most of my life in Boston. Three years ago my husband, Brian Polak, and I drove across the country from Boston to Los Angeles to pursue careers in writing. We're both playwrights separately, but we're writing partners for TV and film. We now live right outside LA in lovely Pasadena, where we write to our hearts' content and dote on our dog, Houdini.

I've been involved in play festivals and workshops (most recently at WordBRIDGE Playwrights Lab), but I have never been to Ashland, which I know is heaven for people who love theatre. I honestly can't wait to get to Ashland, and I'm looking forward to meeting all the wonderful people at ANPF.



I'm working on a few writing projects right now. My new play is a family drama that also deals with the Iraq War. It's quite different from *Technicolor Life*, but it's close enough that I'm considering this play to be its companion piece. In a perfect world, I'd love to see these two plays packaged together like Paula Vogel's *The Mammary Plays*. Speaking of Paula Vogel, she's one of my favorite playwrights in a long list of favorites, including Sam Shepard, Naomi Wallace, Peter Shaffer, and Caryl Churchill, to name a just few.



## BOB CLYMAN

The play I'm working on now involves a bet between a professor of moral ethics and a venture capitalistic as to whether the capacity for pure altruism, untainted by even a hint of self-interest, truly exists in human nature.

I live in North Caldwell, New Jersey. I look out the window of my study every day

while I'm writing and watch deer who are so adorable I forgive them for having eaten every flower.

Although I've never been to Ashland, I've been hearing for years about its reputation for offering beauty, wine, and theatre. I've been to quite a few festivals and script development workshops over the years. Not too many provide the opportunity this one does to spend an entire week working on the play and hearing it read on two separate occasions.

I admire many playwrights, but the ones who have influenced my own writing most tend to be contemporary British writers, such as Caryl Churchill, David Hare, Simon Gray, and Martin Crimp. Of the American writers, I owe a similar debt to Richard Nelson and particularly Wallace Shawn. I've read or seen only a few plays by Bruce Norris, but he's quickly earning a place on that list.

## HARLENE GOODRICH

I look forward with much anticipation to the Ashland New Plays Festival. I'm excited and extremely proud to have had my play selected as one of the four plays to receive a reading. The last time I was in Ashland was on a family trip when I was a kid. I'm sure a lot has changed about the place since those days! While I've won several playwriting competitions, ANPF is an entirely new experience for me.



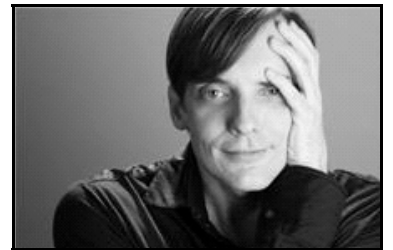
I live in Seal Beach, California, with my husband, Michael. Seal Beach is a quaint little town about 35 miles south of Los Angeles. In 2005, Michael and I finished walking the coast from the Mexican border to the Oregon border. It took us only 22 years to complete! We had many adventures along the way.

At present I'm finishing up a novel and have started a new play, *The Dead Raccoon by the Side of the Road*. I know, crazy title. I hope I can make it work. I love to read and am partial to women authors—Barbara Kingsolver, Kaye Gibbons, Isabel Allende, and Louise Erdrich. I truly love the late Harriet Doerr, who, like me, got a late start in her writing.

## DAVID HILDER

I'm not sure why it's more difficult to write about myself than it is to write a play, but here we are. So! I live in New York, as I have for the past 15 years, and I have to say the city suits my energy. I'm not a 24-hour-a-day person (I love my eight hours of sleep), but I feel at home in NYC, surrounded by people of divergent ages, ethnicities, economic standings, and the like. I'm constantly inspired by what I see.

I've just come off the busiest summer I've ever had. I'm also a director, and I directed two new plays this summer, back-to-back. Both were really delicious experiences, since I'd worked with each playwright previously on other plays of theirs. I love meeting new collaborators, but there's something particularly special about reconnecting with folks you already know and dig. Additionally, I have finally completed a solid first draft of my next play, which is darker than most of my previous writing and therefore kind of exciting and scary.



*The Insidious Impact of Anton* is truly dear to me, and for it to be a winner at ANPF is a thrill. I can't wait to hear it there and to meet Harlene, Bob, and Jami too. I already feel terribly welcome. Thanks!

# ASHLAND NEW PLAYS FESTIVAL

PO Box 3314  
Ashland, OR 97520

(541) 488-7995  
info@AshlandNewPlays.org  
www.AshlandNewPlays.org

NON-PROFIT  
ORGANIZATION  
U.S. POSTAGE  
PAID  
ASHLAND, OR  
PERMIT NO. 7

Return Service Requested

## SNAIL MAIL OR e-MAIL?

In our efforts to be green, we are also delivering this newsletter via e-mail on request.

If you'd prefer to receive it in your inbox rather than your mailbox, please contact us at (541) 488-7995 or [info@AshlandNewPlays.org](mailto:info@AshlandNewPlays.org).

### BOARD OF DIRECTORS

Frederick F. Wright  
*President*

Terry Ansnes  
*Vice President*

Elizabeth von Radics  
*Secretary*

Amanda Berkeley  
*Corresponding Secretary*

Dolores Marx  
*Treasurer*

Melissa Brown

Bill Faiia

Tilly Gibbs

Jan Lofthouse

Gray McKee

Mary Pat Power

Norma Wright

### ADVISORY BOARD

Douglas Rowe  
*Artistic Director*

Federico Behncke

Orion Bradshaw

Richard Elmore

Robert Frank

Jonathan Haugen

Michael Hume

Cristofer Jean

Liisa Ivary

John Pribyl

Caroline Shaffer

Eddie Wallace

Derrick Lee Weeden

Lyda Woods

Angela Workman

## Reading Committee Seeks Members

ANPF is seeking play readers for the 2011 season. After two training sessions in November, Reading Committee members will read 50 to 60 scripts and participate in the selection of the finalists for the 2011 season.

The reading begins in December 2010 and will proceed through two rounds, culminating in a general meeting in May 2011. Along the way, readers will also have the opportunity to meet in discussion groups.

Interested in helping choose next year's winning plays? Please contact us at [info@AshlandNewPlays.org](mailto:info@AshlandNewPlays.org).

OUR  
MISSION

Ashland New Plays Festival assists playwrights in the development of new works through public readings and offers an educational forum to the community through discussions and workshops.

facebook

VISIT US ONLINE! [WWW.ASHLANDNEWPLAYS.ORG](http://WWW.ASHLANDNEWPLAYS.ORG)

We're also on Facebook. "Like" our page and stay in touch!

ANPF